

## 2.Installation

### 2.1.Installing on Windows

To download FishStatJ for Windows, go to [fao.org/fishery/statistics/software/fishstatj/en](http://fao.org/fishery/statistics/software/fishstatj/en).

#### FishStatJ - Software for Fishery and Aquaculture Statistical Time Series

---

FishStatJ is a Windows and Mac application that anyone can use to access FAO's Fisheries and Aquaculture statistics. They include datasets on production, trade and consumption. Data can be extracted and aggregated according to different level of details and international standard classifications. It consists of a main application and several workspaces that include the datasets.

[List of data available within FishStatJ](#) ↔

##### FishStatJ key features

- datasets browsing, data mining and reporting
- data querying, filtering, grouping and aggregation

##### Installing FishStatJ v4.01.0

Download FishStatJ

- for [Windows64-bit \(7,8,10\) auto-extract](#) ([Instructions](#))
- for [macOS](#)



##### Related topics

[Statistics - Introduction](#)

#### 2.1.1.Windows requirements

FishStatJ is compatible with Windows 10; 64-bit version; cannot work with Windows 32-bit. The troubleshooting section below describes how to check your version of Windows.

Starting with FishStatJ version 4.01 Java 11 (OpenJDK project) is included with FishStatJ.

The FishStatJ needs about 1.5GB of disk space (400MB for the application, and the rest for data).

FishStatJ requires between 1Gb and 4GB of memory, depending on the size of the dataset used.

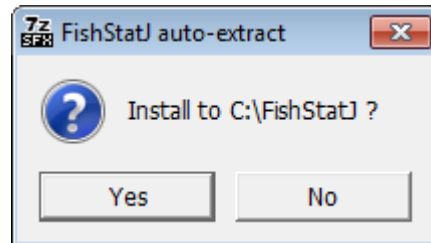
#### 2.1.2.32bit Windows installer

Starting with version 4.01.0 (as of March 2021) 32-bit Windows Operating system is not supported any more.

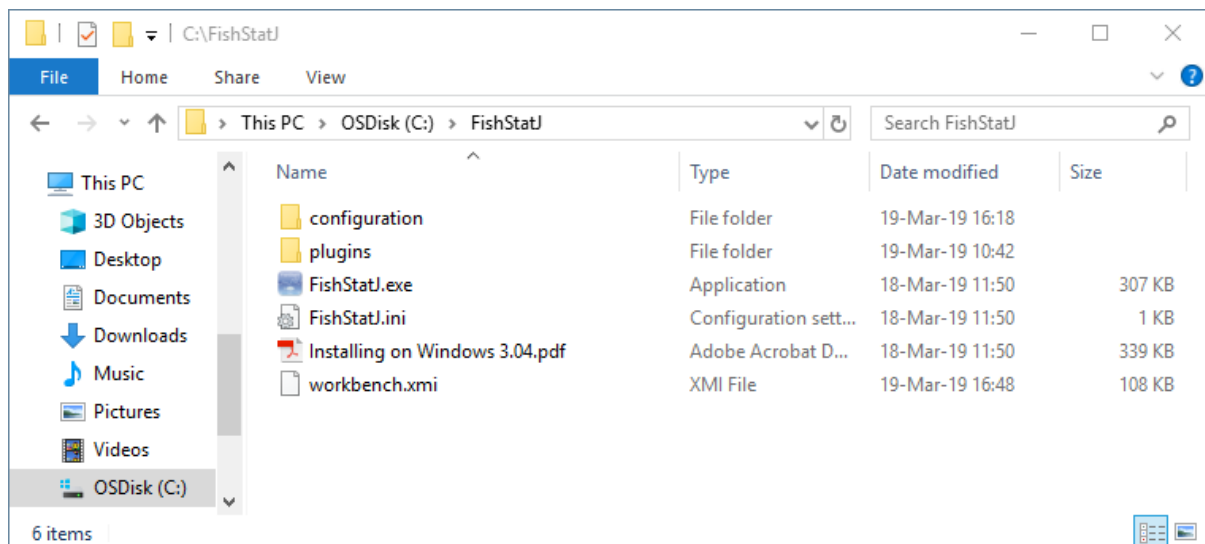
### 2.1.3.Using Windows auto-extract installer

**Note:** If you are not using the auto-update function, then you need to delete the C:\FishStatJ folder using Windows Explorer before running the extract.

When running the auto-extract (**FishStatJ\_Installer.exe**), it will ask for the following permission:



After clicking on the **Yes** button, the installer will extract the application to C:\FishStatJ, and immediately launch FishStatJ after the extraction is complete.

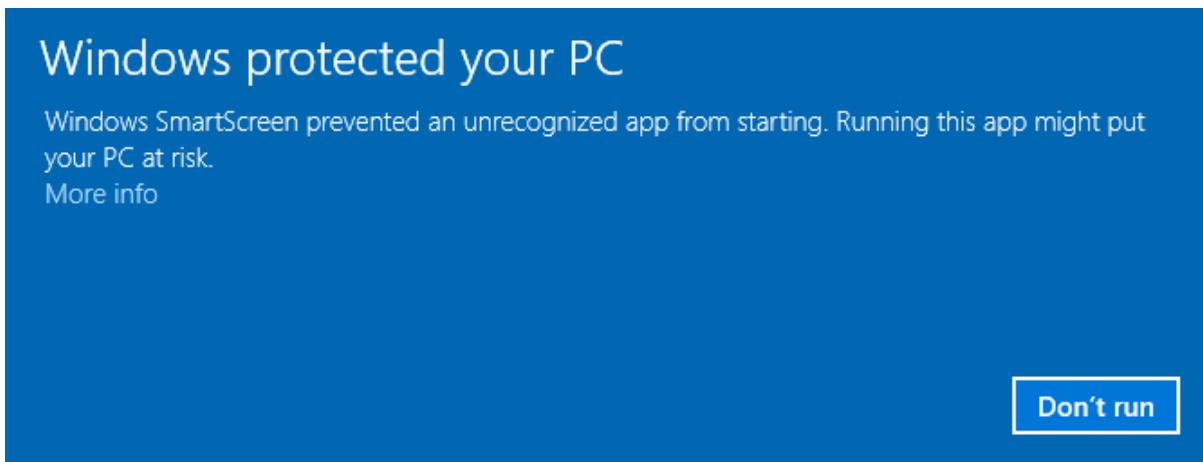


No further action is required.

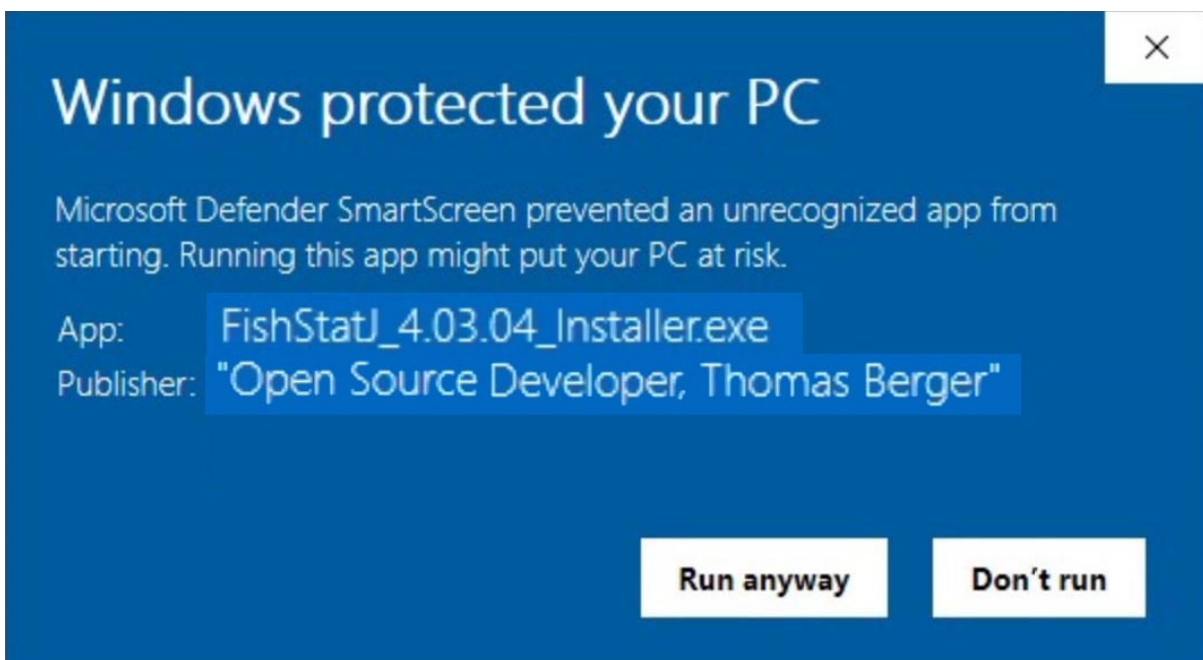
**Note:** The **FishStatJ\_Installer.exe** file is not a real installer but a 7-Zip auto extract archive. As such, it does not require administrative permissions. It requires permissions to create the FishStatJ folder on the C:\ disk; this permission is usually available using accounts that lack Administrative rights.

#### 2.1.4.Allow FishStatJ Certificate

Starting with release 4.03.04 FishStatJ and the auto-extract installer are signed by the developer.

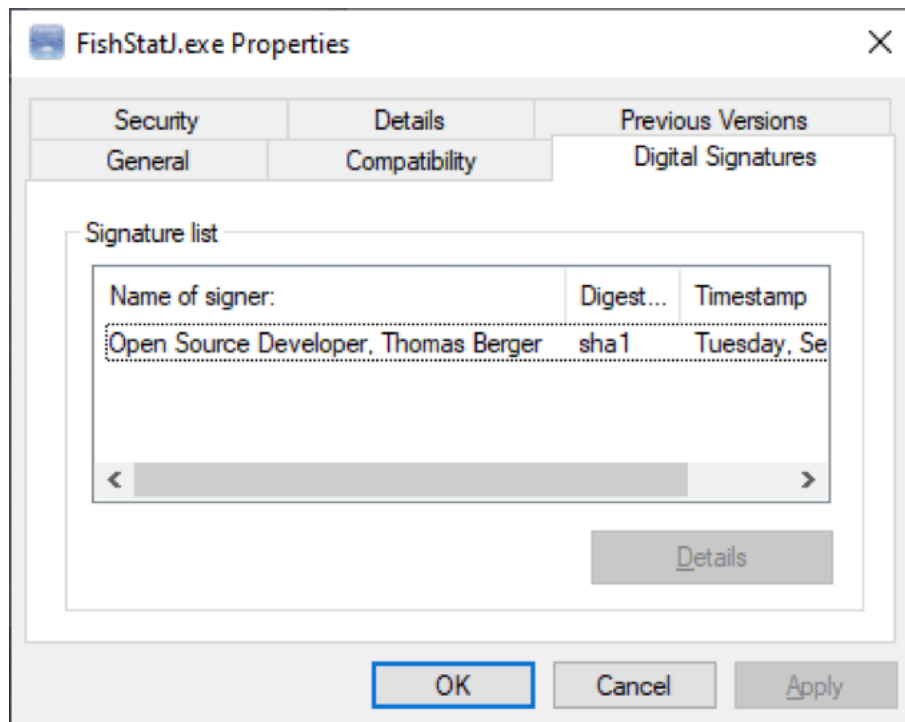


**[More Info]** to continue



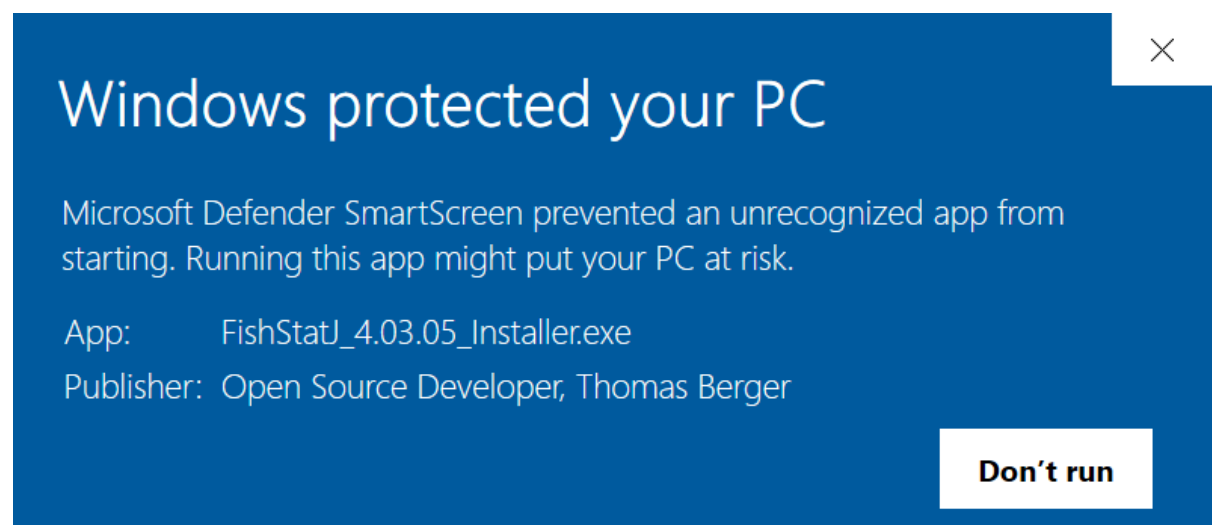
**[Run anyway]** to accept the certificate.

The digital certificate is also visible in the Properties Window:



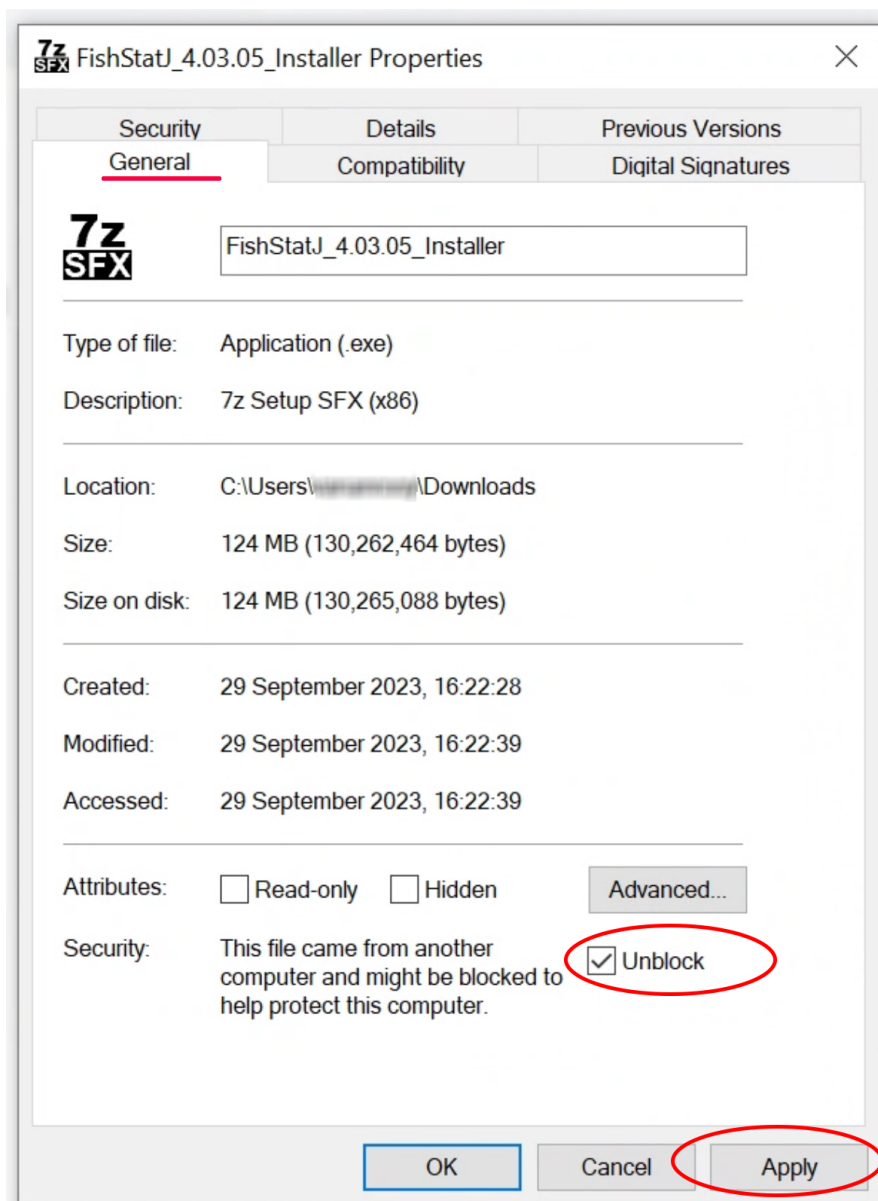
### 2.1.5. Unblock Windows Defender

If you click **[Don't Run]** (above) the certificate is not accepted, and the EXE files (both the auto-extract installer, and FishStatJ.exe) are blocked.



To remove the block, you need to accept the publisher certificate.

To accept the publisher certificate, open the EXE file properties from Windows Explorer; **[General]** tab:



To accept the publisher, click the **Unblock** checkbox.

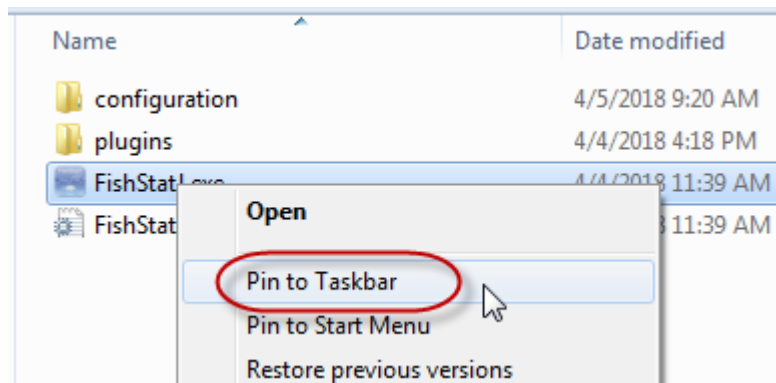
**Note:** If the EXE file is corrupted during the download; only the General tab will show. To have the correct tabs appear as shown here (General, Digital Signatures) delete the EXE file, and re-download it from the FishStatJ web-site.

### 2.1.6. Do not move or rename files

Please do not move or rename the files and folders, this will break the program. To resolve a corruption issue, delete the entire folder content: C:\FishStatJ and run the Install.exe program again to extract the whole folder structure.

### 2.1.7. Adding FishStatJ to the Taskbar

Applications can be added to the Taskbar (usually on the bottom of the screen) by right-clicking on the **FishStatJ.exe** file and select the **Pin to Taskbar** option.



A FishStatJ shortcut has now been added to the Taskbar:



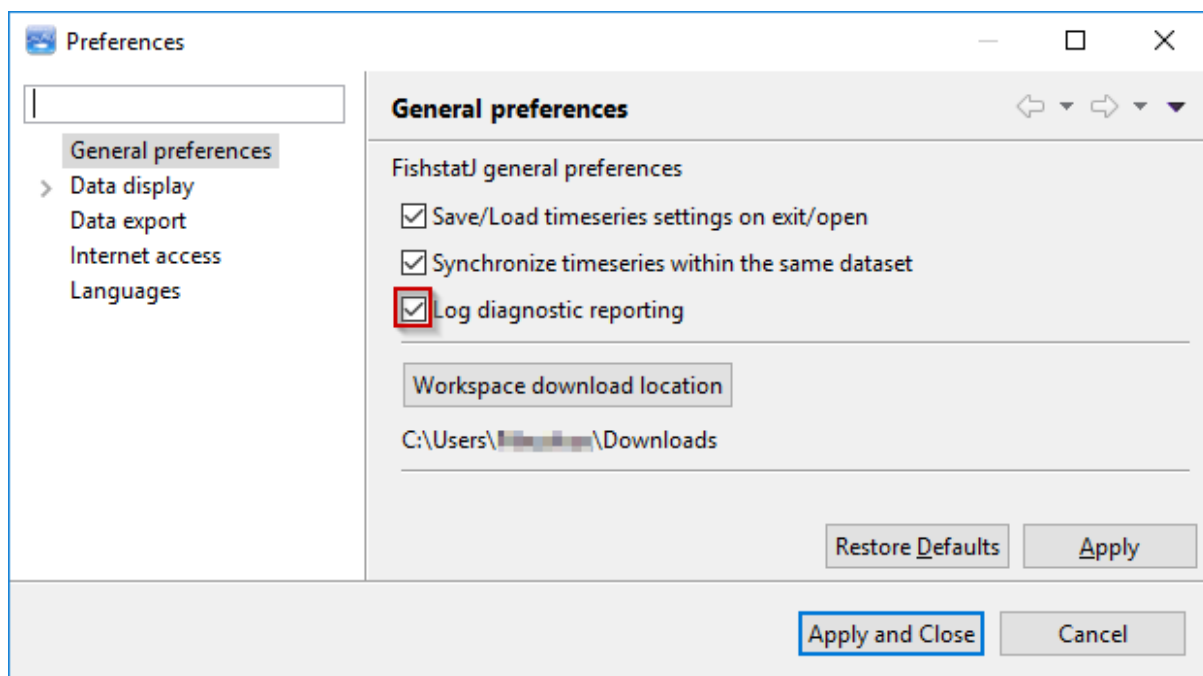
## 2.3. Troubleshooting

### 2.3.1. Diagnostic reporting

In case you encounter an issue with the application, please turn on **Log diagnostic reporting**, which you can find in the **Edit** → **Preferences** menu and then exit and re-launch FishStatJ.

The current FishStatJ version is visible in the Help->About menu.

When you turn on **Log diagnostic reporting** in the **Preferences**, FishStatJ will check and create a log report if the program encountered an error. Please do share this report with us – it helps us to diagnose problems.

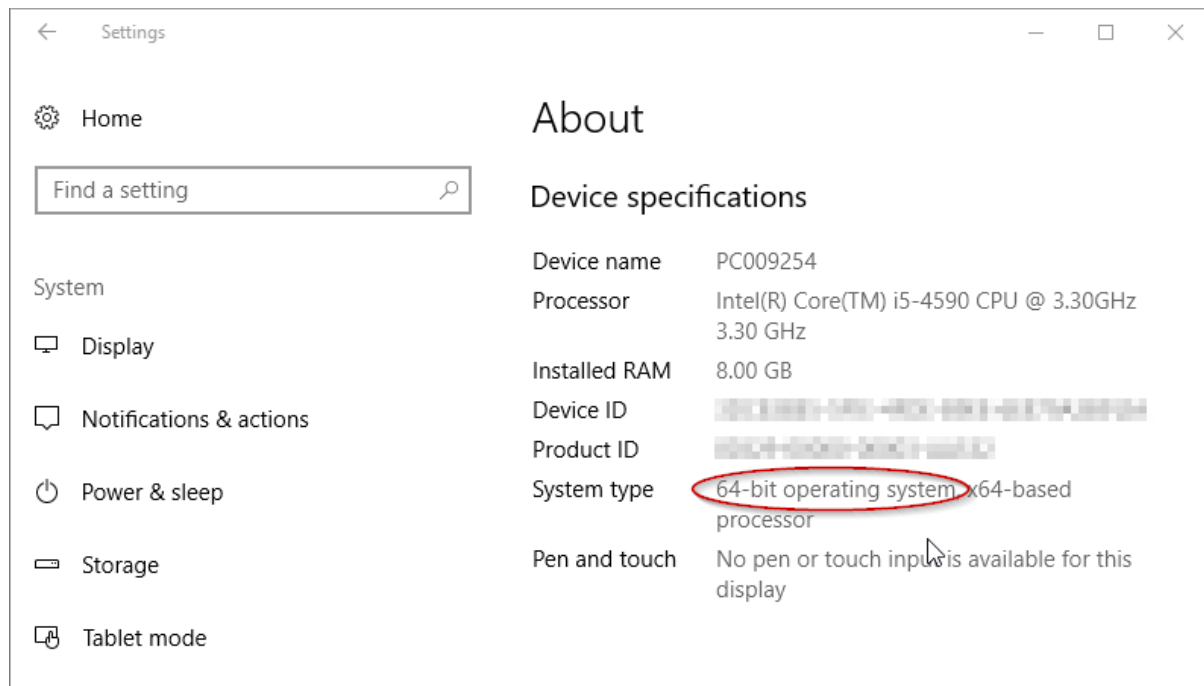


We are working constantly to update our data; publishing workspaces with the latest fisheries and aquaculture data. We are grateful for any type of feedback, since it allows us to improve the application.

### 2.3.2.Windows 32-bit not supported

FishStatJ is a 64-bit software, and therefore requires 64-bit Windows. The reason for this 64-bit requirement relates to the memory handling required for loading statistical data.

To check if your computer is running Windows 64-bit, please refer to the following Microsoft Support webpage: [support.microsoft.com/en-us/help/13443/windows-which-operating-system](https://support.microsoft.com/en-us/help/13443/windows-which-operating-system)



**System type** shows whether your computer is running a 32- or 64-bit version of Windows.

### 2.3.3.Windows launch failure

In the case the FishStatJ application does not start (show the FishStatJ logo, or fails to show the main menu); perform the following steps to delete and re-copy the application:

- Before launching the EXE Auto-Extract to install a new version, exit any open instance of FishStatJ (**File** → **Exit**) so that the files of the new version can be copied.
- Delete the FishStatJ folder inside the C:\ disk. using Windows Explorer.
- Re-run the FishStatJ auto-extract EXE (installer)

**Note:** The **FishStatJ\_Installer.exe** file is not a real installer but a 7-Zip auto extract archive. If a previous version of FishStatJ is present on your hard disk, not removing the FishStatJ folder (as described above) will not allow to launch the application correctly.



### **2.3.4.Windows - exe file validation**

In addition to the digital certificate embedded in the EXE file (described in the section Windows installation); we are including a text file (TXT format), on the web-page which provides the hash for each version of the FishStatJ\_Installer.exe (auto-extract).

Once extracted, you find a TXT file with the FishStatJ.exe hash in the C:\FishStatJ folder.

The hash is a mathematic function, to verify the whole file. The hash is calculated using the CERTUTIL tool, which is standard on Windows 10.

To check, open a DOS window, then change to the directory using the CD command. Then run CERTUTIL --hashfile FishStatJ.exe  
or CERTUTIL --hashfile FishStatJ\_Installer.exe.

This will provide the hash calculated from the EXE file, which you compare against the hash we provide.

This way you can be sure, that the EXE files have not been tampered with.